



6-MileWiFi unit

The 6-MileWiFi marine unit is a remarkable WiFi client unit for semi permanent mobile use at yachts, mobile home's, blue water cruisers etc. The 6-MileWiFi unit has a special philosophy which increase the range significantly. *The distance record held by the 6-MileWiFi unit is 32Km over sea (17 Nautical Miles!!)*

The fundamental idea behind our design is the lack of coaxial cable and thus also the lack of coaxial losses.

A few meters of good quality coax reduce the radiowave performance with 50% or more in most cases!

In the 6-MileWiFi unit the transceiver is directly mounted under a 10dB hi-gain omni-directional antenna with vertical polarization. This antenna gain combined with 1000 miliWatt (1 watt) output power give a 10 Watts Effective Radiated Power WiFi unit.

The advantage from a hi-gain antenna is that the already extra sensitive receiver gets the radio signals also back with 10dB amplification by the antenna!

Between the 6-MileWiFi unit and the computer runs only one 5 meter heavy-duty USB cable with ferrites against EMC and diecast metal & gold plated USB connector for durable use in corrosive marine environments.

The 6-MileWiFi unit is water resistant at IP-65 level and filled with a moisture absorbing material against large

temperature changes and tropical showers. The 6-MileWiFi unit has 2 cable-tie attaching points at the back. The 6-MileWiFi unit can semi permanent mounted at the boom or back-stay during anchorage in a bay or a harbor.

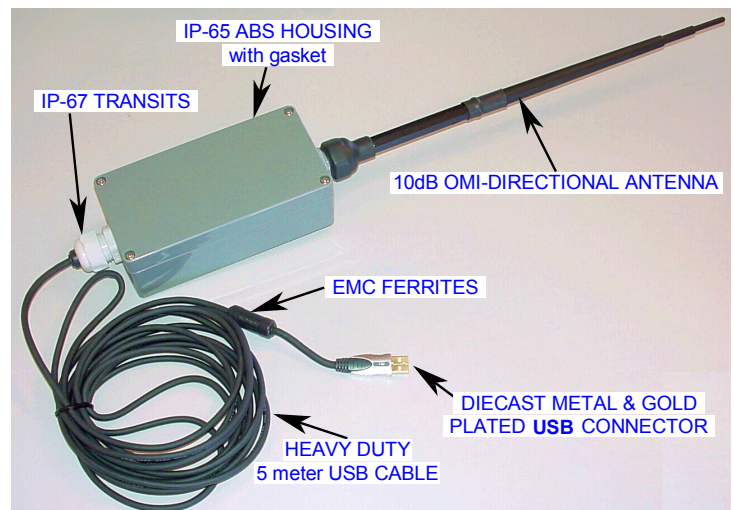
Polarization:	Vertical, upright mounting only.	Data Rate:	802.11b: UP to 11Mbps 802.11g: 54Mbps
Frequency band:	2,4 Ghz	OS Supported:	Windows 98SE, Windows ME, Windows 2000, Windows XP, Linux 2.6, Mac 10.4, Windows-7
Output power:	+30 dBm ~ 1 Watt	Channel:	1~11 channels (North America) 1~13 channels (General Europe) 1~14 channels (Japan)
Receive Sensitivity:	802.11b: -92dBm 802.11g: -76dBm 802.11n: -73dBm		
Chipset:	Realtek 8187L		
Operating Temp:	0°C ~ +50°C		
Standards:	Wireless: IEEE 802.11b/g: USB 2.0 standard		

Ordering info:

- **6-MileWiFi unit** - complete - Nr. **3000161**
- Replacement antenna - Nr. **3000155**
- Replacement USB cable - Nr. **3000124**

Extension cables are not usable because of the large voltage drop at the USB-port.

Due to European regulations this product is not intended for the EU market.

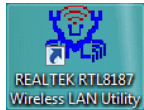


The correct drivers for Windows can be downloaded here:

- Windows-XP: http://www.shiptron.nl/docs/WiFi/RTL8187_XP.zip
- Vista: http://www.shiptron.nl/docs/WiFi/RTL8187_VISTA.zip
- W-7: http://www.shiptron.nl/docs/WiFi/RTL8187_W7.zip

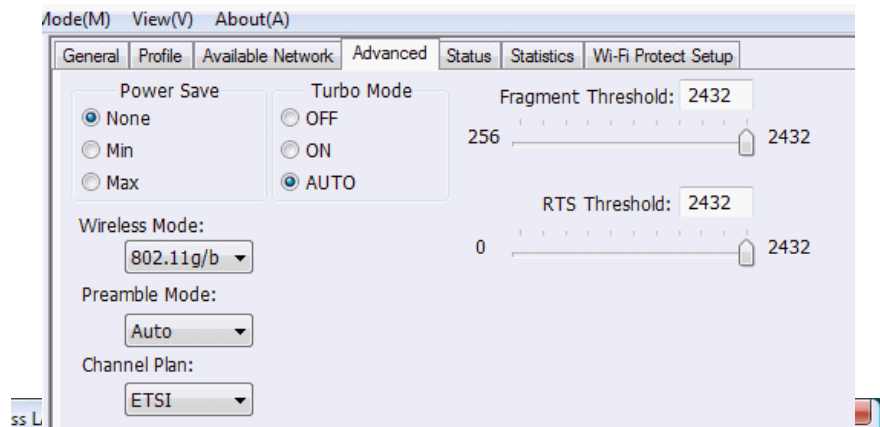
Installation

Unplug the 6-MileWiFi unit and unzip the correct driver to a known map. Run the setup.exe and wait until the installation process has ended. Click at the correct boxes if ask to do so. If the installation process is ready and has ended, restart the computer. When the computer has completed the startup procedure, connect the 6-MileWiFi to any USB port direct to the computer. Do never use a USB-hub with the 6-MileWiFi unit!!!

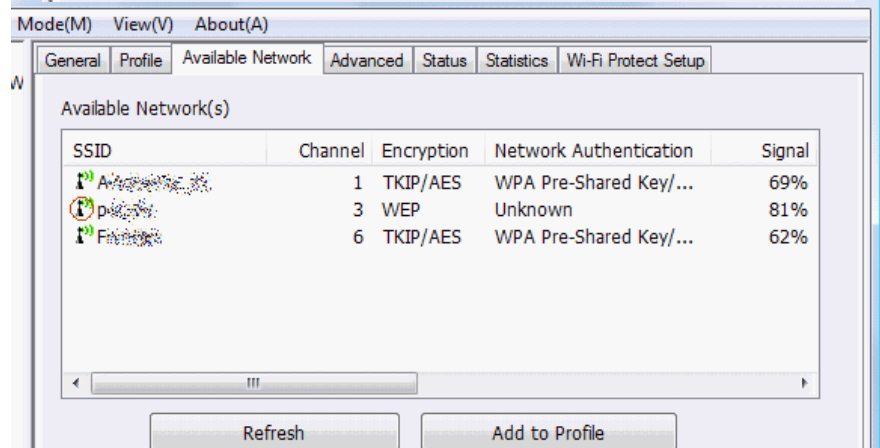


Click this icon:

Adjust the following screens:



Choose a access point:



Connected:

